



Flight Plan & Site Survey

Created using **RPAS Wilco**®

Reference No:	32CBD3
Title:	Mission 04-20-2024
Pilot Name:	
Pilot Certificate:	
Flight Start:	April 20, 2024 10:06 AM
Flight End:	April 20, 2024 12:06 PM
Flight Address:	50 Pim Street, Sault Ste. Marie, Ontario P6A 3G4, Canada
Flight Area (Latitude):	46° 30' 16.87" N (46.505)
Flight Area (Longitude):	84° 19' 25.67" W (-84.324)
Altitude - Radius:	Alt: 400 ft - Rad: 1111.2 m (0.6 nm)
Classification:	UNCONTROLLED
FIR - Contact:	CZYZ - 905-676-4509

Please ensure you received all required authorizations prior to flight.

Disclaimer

This Site Survey was created using RPAS Wilco by AIM Robotics. The flight plan contained is intended only for RPAS flights on the date/time and location specified. The user accepts all responsibility for the accuracy and completeness of the information contained.

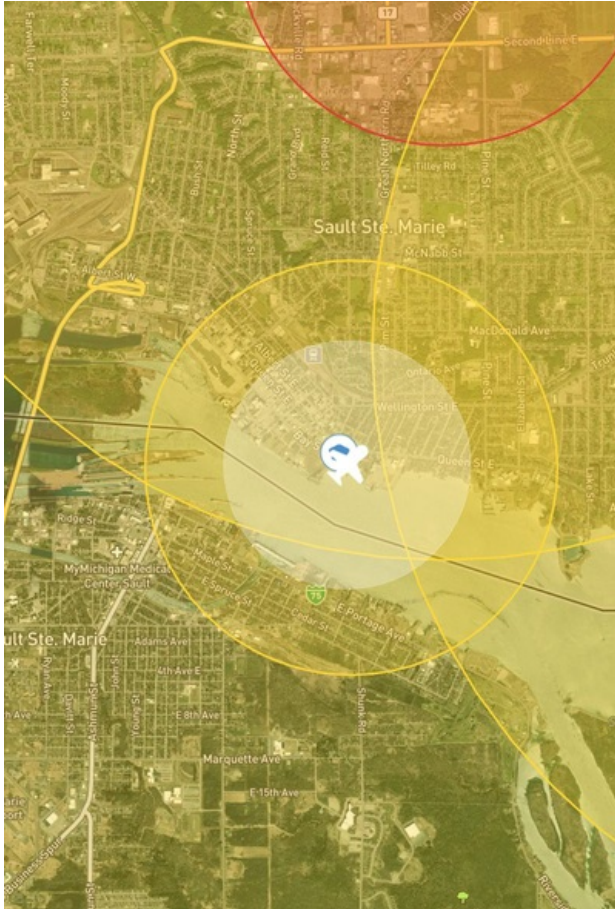
For the complete Terms & Conditions, see

<https://rpswilco.com/#/tnc>

Included

- Site Survey
- Obstacles (if available)
- Nearby Aerodromes
- Canadian Aviation Regulations
- GFA
- Aerodrome Supplements
 - METAR & TAF (if available)
 - NOTAMS
 - CFS



Flight Map



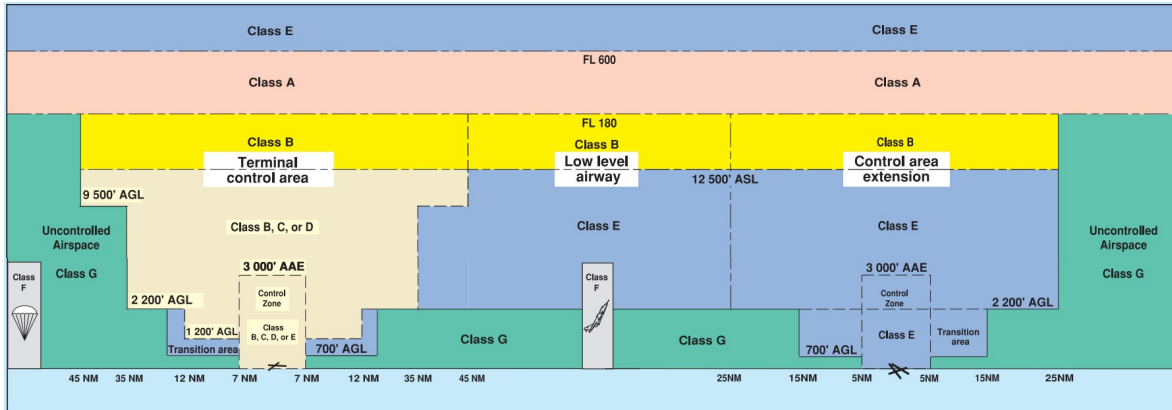
RPAS Specification

- **Manufacturer:**
- **Model:**
- **Registration Number:**
- **Eligible for advanced operations:**
No
- **Manufacturer RPAS safety assurance:**
 - **Controlled Airspace:** N/A
 - **Near People:** N/A
 - **Over People:** N/A

MAP Details

	Latitude	Longitude
 MODEL	46° 30' 16.87" N (46.505)	84° 19' 25.67" W (-84.324)
 Pilot	46° 30' 20.47" N (46.5057)	84° 19' 29.27" W (-84.3248)

Airspace Classification



Overlying Airspaces

Class	Name	Floor	Ceiling
E	Sault Ste. Marie, ON TA	700AGL	12500MSL
B	Sault Ste. Marie, ON TA	12500MSL	18000MSL
E	V348 Airway	2200AGL	12500MSL
B	V348 Airway	12500MSL	18000MSL
E	T675 Airway	2200AGL	12500MSL
B	T675 Airway	12500MSL	18000MSL
E	Sault Ste. Marie, ON CAE	2800MSL	12500MSL
B	Sault Ste. Marie, ON CAE	12500MSL	18000MSL
E	V300 Airway	2200AGL	12500MSL
B	V300 Airway	12500MSL	18000MSL
E	Southern Ontario Low Level Control Area CAE	3500MSL	12500MSL
B	Southern Ontario Low Level Control Area CAE	12500MSL	18000MSL

Nearest Aerodromes & Distance from Operation

SAULT STE. MARIE (CPX8 - WATERDROME -)	Lat: 46.504	Long: -84.323	0.098KM	0.05NM SE
SAULT STE. MARIE (CNR3 - HELIPORT - Reg)	Lat: 46.504	Long: -84.323	0.098KM	0.05NM SE
PARTRIDGE POINT (CPP9 - WATERDROME -)	Lat: 46.514	Long: -84.248	5.892KM	3.18NM E
SAULT STE. MARIE (SAULT AREA HOSP) (CSM9 - HELIPORT - Cert)	Lat: 46.547	Long: -84.312	4.791KM	2.59NM N
SAULT STE. MARIE (CYAM - AERODROME - Cert)	Lat: 46.485	Long: -84.509	14.345KM	7.75NM W

ONTARIO

AERODROME/FACILITY DIRECTORY

SAULT STE. MARIE ON (Heli)**CNR3**

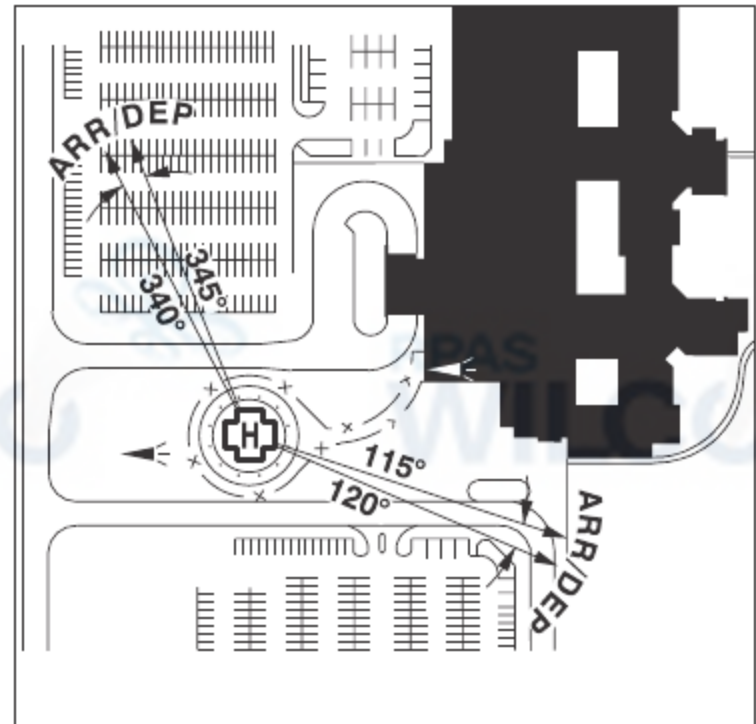
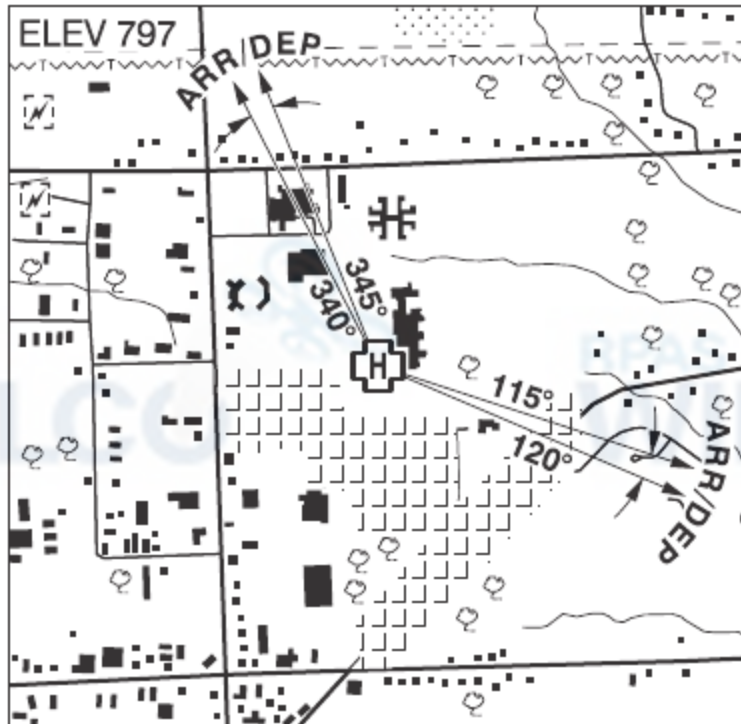
REF	N46 30 16 W84 19 24 Adj S 7°W UTC-5(4) Elev 580' A5001	
OPR	Canadian Bushplane Heritage Centre 705-945-6242 Reg	
PF	B1 avbl 13-22Z† C-2,3,4,5,6	
FLT PLN		
FIC	London 866-WXBRIEF (Toll free within Canada) or 866-541-4104 (Toll free within Canada & USA)	
SERVICES	13-22Z† May-Oct, dawn til dusk Nov-Apr	
FUEL	100LL Humphrey Aviation Services 705-542-2590	
HELI DATA	57' dia concrete Opr	
LIGHTING	Floodlit Apron; Aiming point lighting, 6 red lgts.	
COMM	ATF tfc 122.7 2NM 3000 ASL	
PRO	Arr/dep btwn 131°-246° fr heli. Arr/dep hover area & aiming point lctd S of pad.	
CAUTION	Co-located water aerodrome, docks just W of helipads. Hi lvl of tfc in vic Sault, Michigan aprt, also on 122.7	

ONTARIO

AERODROME/FACILITY DIRECTORY

SAULT STE. MARIE (SAULT AREA HOSP) ON (Heli)

CSM9



REF	N46 32 51 W84 18 45 5N 7°W UTC-5(4) Elev 797' A5001
OPR	Sault Area Hospital 705-759-3434 Ext 4412 Cert PPR
PF	A-1 C-2,3,4,5,6
FLT PLN	
FIC	London 866-WXBRIEF (Toll free within Canada) or 866-541-4101 (Toll free within Canada & USA)
HELI DATA	86' dia concrete 115' dia safety area Max heli overall length 57.4'
RCR	Opr
LIGHTING	RY(LO)
COMM	
ATF	tfc 122.7 2NM 3000 ASL
PRO	Arr/dep btwn 115°-120° & 340°-345° fr heli, slope 16% (H2), day/night use.
CAUTION	Twr 224 AGL aprx 0.2NM W and twr 230 AGL aprx 0.7NM NW of heli.

ONTARIO

AERODROME/FACILITY DIRECTORY

SAULT STE. MARIE ON

CYAM

REF	N46 29 06 W84 30 34 8WSW 7°W (2012) UTC-5(4) Elev 632' A5001 LO4 HI4 HI5 CAP	
OPR	Sault Ste. Marie Airport Development Corporation 705-779-3031 1045-0345Z† Cert Ldg fees	
PF	B-1,2,3,6,7 D-4,5	
CUST	AOE/30 888-226-7277	
FLT PLN	Pilots to open/ close VFR flt plan with London rdo 123.475 or by phone. FIC London 866-WXBRIEF (Toll free within Canada) or 866-541-4104 (Toll free within Canada & USA) WX METAR H24. TAF H24, issue times: 02, 08, 14 & 20Z.	
SERVICES	Call out chg may be levied for one or more svcs	
FUEL	100LL, JA-1 (FSII avbl)	
OIL	100, 15W50	
S	1,2,3,4,5,6	
SUP FL	LHOX, D & A-ice PN	
JASU	Mil-CE14, CA2, GTC/GTE85	
PVT ADV	Executive Aviation (World Fuel Services) 122.45 Mon-Fri 11-01Z†, Sat-Sun 1100-0001Z† O/T call out chg 249-889-1244 JD Aero (Avjet Fuels) 128.875 10-22Z† 705-779-3977 Ext 200 O/T call out chg apply 705-779-3977 Ext 213/215 or 705-541-8153 (FBO mgr)	
MIL CON	JD Aero Technical (Avjet Holding) 705-779-3977	
RWY DATA	Rwy 04(040°)/22(220°) 6000x148 ASPH Rwy 22 down 0.3% Rwy 12(115°)/30(295°) 6000x200 ASPH	
RWY CERT	Rwy 04/22 AGN IV Rwy 12 RVR 1200(1/4sm)/Rwy 30 RVR 1200(1/4sm) AGN IV	
RCR	Opr Win maint CRFI/RSC 1030-0230Z† Nov 15-Mar 31 O/T call out chg, 3 hrs PN. PLR/PCN	
LIGHTING	04-AO(TE ME) P2, 22-AO(TE ME) P2, 12-AN(TE HI), 30-AO(TE HI) P1 ARCAL-118.8 type K when twr clsd.	
COMM	RCO London rdo 123.475 (FISE) 126.7 (bcst) ATIS 133.05 1130-0330Z† GND 121.7 1130-0330Z† TWR Sault 118.8 (E) 1130-0330Z† (emerg only 705-779-3707) MF tfc 118.8 0330-1130Z† 5NM shape irregular 3000 ASL (CAR 602.98) MF only applicable over Cdn territory PAL Toronto Ctr 132.65 344.5	
NAV	VOR/DME SSM 112.2 (T) Ch 59 N46 24 44 W84 18 54 ILS IAM 109.5 (Rwy 12) RVR LOC reliable only within 10° either side of centreline.	
PRO	Heli arr/dep E as indicated on VTPC. Heli arr/dep N & S at Twr discretion. Hi lvl of tfc in the vic Sault, Michigan aprt, also on 122.7. Twy G run-ups: only south of the svc road intxn and facing west.	
CAUTION	Dur win months btwn 0330-1130Z (when ATC clsd), aprt maint & snow removal vehicles may be oprg on the rwy surface. Ctc all gnd vehicles on MF when ATC clsd.	